

# Emerald Deluxe Platinum Spa

Elsewhere price \$10,490

**Clearance Price \$6,999**

**Limited Stock**



Scan QR code  
for purchase

**Dimensions:** 2m x 2m x 0.9m

**Seating:** 1 Lounger & 5 Chairs

**Water Capacity:** 1200L

**Dry Weight:** 300kg

**Filled Weight:** 1500kg

**Power:** 10amp

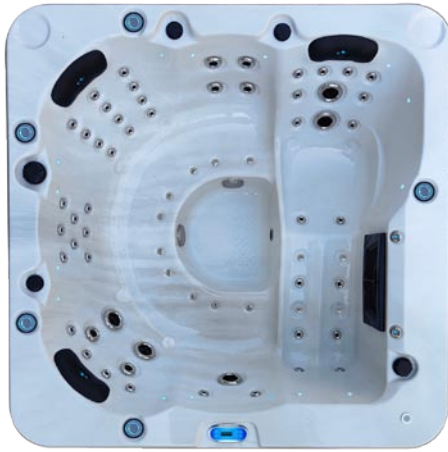
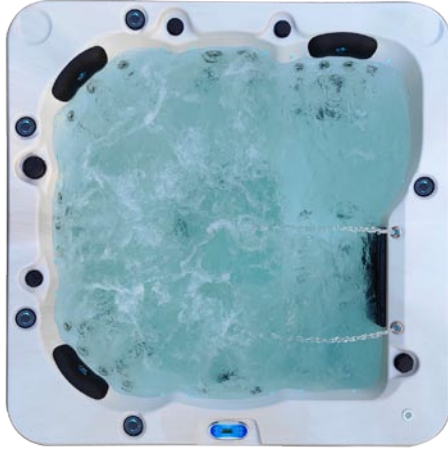
## Spa Features

- Balboa control system
- Time programable control system to take advantage of home solar systems
- Premium 2hp high speed jet pump
- Premium 0.35hp energy efficient cleaning pump
- Premium 2kw set and forget inbuilt heater
- 0.6hp Air blower
- Ozone water sanitiser
- 69 x Premium Jets with stainless steel faces (Not standard clip in jets)
- 3 x Padded headrest with LED multicoloured lights
- 2 x Waterfalls with LED multicoloured lights
- 4 x Drink coasters with LED multicoloured lights
- 16 x LED multicoloured wall lights
- Water directional control handle
- Water pressure control handles
- Insulated key lockable vinyl hardcover
- Insulated energy efficient cabinet
- Insulated energy efficient solid ABS-fiberglass reinforced base
- Stainless steel structural frame
- 10 Amp power lead supplied



**Aqua Pulse  
Spas**

# Emerald Deluxe Platinum Spa



Black Opal & Grey Cabinet

White Opal & Grey Cabinet

Blue Opal & Grey Cabinet



## CONTACT DETAILS

Email: [sales@aquapulsespas.com.au](mailto:sales@aquapulsespas.com.au)

Web: [www.aquapulsespas.com.au](http://www.aquapulsespas.com.au)

Phone: (07) 3208 4625

## STORE LOCATION

**YATALA**

Unit 2/31 Dixon St,

Yatala QLD 4207



**Aqua Pulse  
Spas**